

# Test Group Summary Report

## C40B Petroleum Hydrocarbons in Water

### January 2025 PT Round

---

Issued: February 28, 2025

## Table of Contents

1.0	The Proficiency Testing Report .....	1
2.0	Definitions .....	1
3.0	Scoring System .....	1
3.1	Homogeneity and Stability Assessment .....	2
3.2	The z score .....	2
3.2	Composite (PT) Score .....	2
3.3	Identifying Bias .....	2
3.4	Deviations from Evaluation Procedure .....	3
4.0	PT Round Specific Data Summary .....	3
4.1	Summary statistics .....	3
4.2	z- Score Plots .....	3
4.3	kernel density plots.....	3
4.4	stability and homogeneity Plots.....	3
4.5	Box-and-Whisker Plots .....	3
4.6	Historic Comparison Plot .....	3
	Annex A Summary by Analyte .....	4

## 1.0 The Proficiency Testing Report

The Proficiency Testing Report consists of two parts.

- *PTC Proficiency Testing Report*: This report contains participant-specific data and other confidential information. This report is emailed to participants at the end of the PT round.
- *Test Group Summary Report*: A Test Group Summary Report is created for each quantified test group at the end of the PT round. These reports contain more detailed information on the round than is found in the participant-specific PTC Proficiency Testing Report. These reports do not contain any confidential information and are made available on the PTC web site.

## 2.0 Definitions

The participant-specific PTC Proficiency Testing Report contains some terms that new participants may not be familiar with.

<i>Code</i> :	The registration code that is unique to each analyte that a participant is registered for.
<i>App</i> :	If a participant is accredited by CALA, this three-digit number is the appendix number that the accredited method is assigned to.
<i>N</i> :	The number of participants results that were used to calculate the summary statistics. This excludes qualified data (e.g., <) and any results that were flagged as outliers.
<i>Assigned</i> :	The Assigned Value is the robust mean of the reported results, outliers excluded. This is often referred to as the “target” value.
$\pm u$ :	The uncertainty of the assigned value.
<i>Reported</i> :	The result reported by the participant.
<i>s</i> :	The Standard Deviation of Proficiency Assessment (SDPA). This value is used to determine the acceptance limits for the PT evaluation.
<i>z-Score</i> :	A value assigned to each reported result that is a measure of the degree to which it deviates from the Assigned Value.
<i>Score</i> :	The composite score of the four results reported for each analyte. It is normalized to a score out of 100.
<i>Bias</i> :	A flag assigned if bias is detected using the re-scaled z-score procedure.

## 3.0 Scoring System

Participant performance is evaluated for each proficiency testing sample by a quantitative method that is consistent with ISO/IEC 17043 – *Conformity assessment- General requirements for the competence of proficiency testing providers*, the *International Harmonized Protocol for Proficiency Testing of (Chemical) Analytical Laboratories* (2006), and ISO 13528:2015 *Statistical methods for use in proficiency testing by interlaboratory comparisons*.

The following is a brief description of the evaluation procedure used by PTC. The detailed evaluation procedure is described in PROC09 – *PT Evaluation Procedure*, which is available on the PTC website ([www.PTCCanada.org](http://www.PTCCanada.org)).

### 3.1 HOMOGENEITY AND STABILITY ASSESSMENT

Homogeneity and stability are assessed using participant data. Regression analysis is performed on reported result against order of sample production (Homogeneity) and reported result against date of analysis (Stability). If the slope is significantly different than zero for either then the Standard Deviation of Proficiency Assessment (s) is increased to minimize the impact.

### 3.2 THE Z SCORE

A "z-score" is calculated for each reported result as follows:

$$z - Score = \frac{(x - \bar{X})}{SDPA} \quad \text{where: } x = \text{participant result};$$

$\bar{X}$  = the Assigned Value;  
SDPA = the Standard Deviation for Proficiency Assessment.

The assigned value  $\bar{X}$  is generally estimated from the inter-laboratory Robust mean after outliers due to obvious gross errors (e.g., reported in wrong units) have been removed.

The Standard Deviation for Proficiency Assessment, s, is determined as follows:

- The inter-laboratory Robust standard deviation ( $Stdev_{rob}$ ) is calculated using reported results, obvious outliers removed;
- The regression equation standard deviation ( $Stdev_{reg}$ ) is estimated from regression equations derived from previous studies (see PROC11- *PT Regression Equations* for details);
- The SDPA is the higher of  $Stdev_{rob}$  and  $Stdev_{reg}$ ;
- When a laboratory reports its detection limit, s will be estimated using a pooled variance procedure that uses both the inter-laboratory data and the reported detection limit.

### 3.2 COMPOSITE (PT) SCORE

Since each PT round involves four or two separate samples of distinct concentration for each test, it is necessary to calculate a composite PT score for each test to determine overall performance. The composite score is calculated by first averaging the absolute z-scores for the four results and then calculating a final score as  $100 + (-15 \times \text{avg } |z|)$ .

Acceptable PT Scores equal or exceed 70.

### 3.3 IDENTIFYING BIAS

The proficiency testing report provides flags for bias. These are determined using the re-scaled z-score procedure.

$$RSZ = \frac{\sum z}{\sqrt{N}} \quad \text{where } z = \text{the } z\text{-score}$$

N = the number of samples

Flags are assigned for each test group/parameter combination as follows:

$RSZ \geq -2$ and $\leq 2$	no flag assigned
$RSZ > 2$	H (High)
$RSZ > 3$	VH (Very High)
$RSZ < -2$	L (LOW)
$RSZ < -3$	VL (Very Low)

## 3.4 DEVIATIONS FROM EVALUATION PROCEDURE

Other than changes to the Standard Deviation of Proficiency Assessment due to homogeneity or stability flags, any deviation from the published evaluation procedure is described on the cover page(s) of the final *PTC Proficiency Testing Report*.

## 4.0 PT Round Specific Data Summary

The following pages provide more detailed information about the PT round indicated in the cover page of this report than is found in the participant-specific PTC Proficiency Testing Report. The graphical representations and the statistical summaries are based upon the data after outliers have been removed.

### 4.1 SUMMARY STATISTICS

In addition to some of the statistics found in the customer reports, this table includes additional summary statistics such as Median, different measures of dispersion, the number of outliers removed, the number of results in the Questionable range ( $|z|$  between 2 and 3) and the Unacceptable range ( $z > 3$ ), and whether a data set was flagged for Homogeneity or Stability. This section also includes sorted scatter plots of the data for each sample.

### 4.2 z- SCORE PLOTS

The z -scores for each sample are ranked in increasing order and plotted. When the data is normally distributed, the plot should show a slight sigmoidal curve, with an equal number of points above zero as below. Each bar in these plots is colour-coded to indicate the analytical method used by the participant.

### 4.3 KERNEL DENSITY PLOTS

Kernel density plots are generated for each data set. These plots are a graphical way to represent the overall data distribution and are used to visualize possible deviations from normality and unimodality.

### 4.4 STABILITY AND HOMOGENEITY PLOTS

Plots of reported result against analysis date, and reported result against order of bottling are displayed, along with the regression line. These regression analyses are used to determine if the SDPA should be adjusted due to homogeneity or stability.

### 4.5 BOX-AND-WHISKER PLOTS

Box-and-Whisker plots are another way to display the distribution of the data. The box denotes the first and third quartile and the whiskers are the 5<sup>th</sup> and 95<sup>th</sup> percentile.

### 4.6 HISTORIC COMPARISON PLOT

The Historic Comparison Plot is a plot of robust mean against robust standard deviation for the previous ten PT rounds as well as the current PT round. This plot can be used to identify possible changes in the sample formulation.

F2: C10-C16

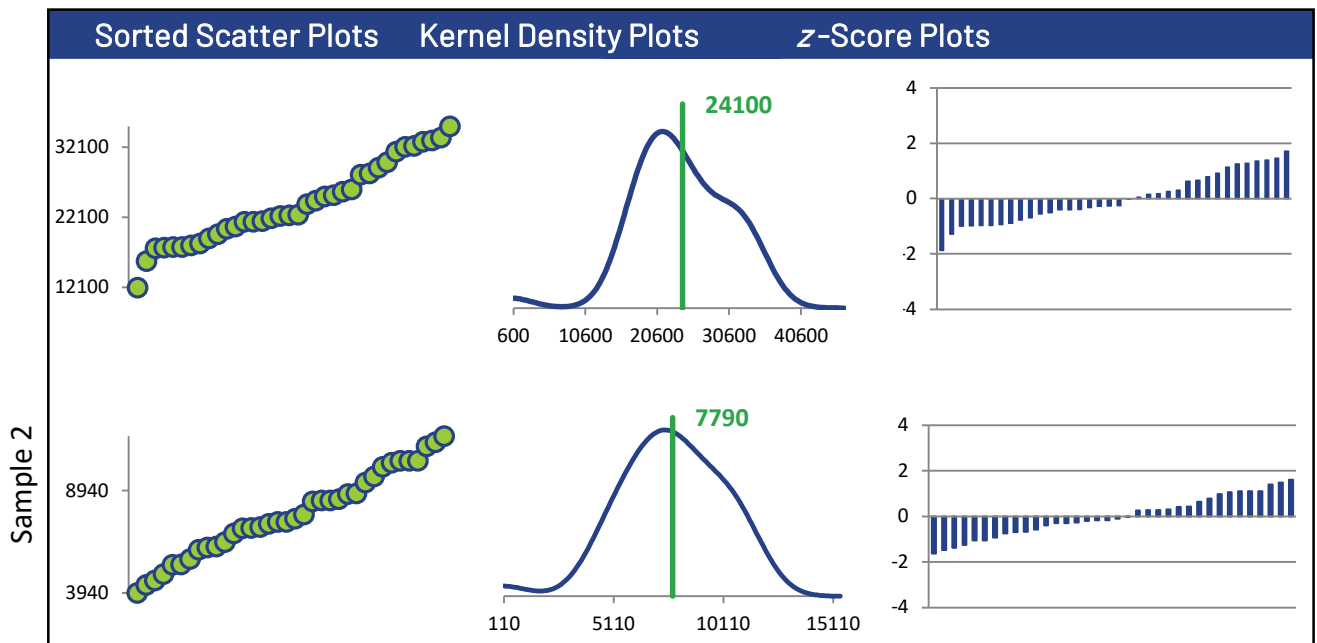
Summary Statistics

Statistic	C40B-1	C40B-2	C40B-3	C40B-4
N	36	36	35	34
Median µg/L	22500	7480	28800	410
Robust Mean µg/L	24100	7790	28900	397
U µg/L	1340	492	1340	32.2
Robust Standard Deviation µg/L	6410	2360	6330	150
Regression Standard Deviation µg/L	3620	1170	4340	59.6
Stability Flag				
Homogeneity Flag				
Standard Deviation Used (SDPA) µg/L	6410	2360	6330	150
Outliers	1	1	2	2
z >3.0	0	0	0	1
2< z <3	0	0	2	2

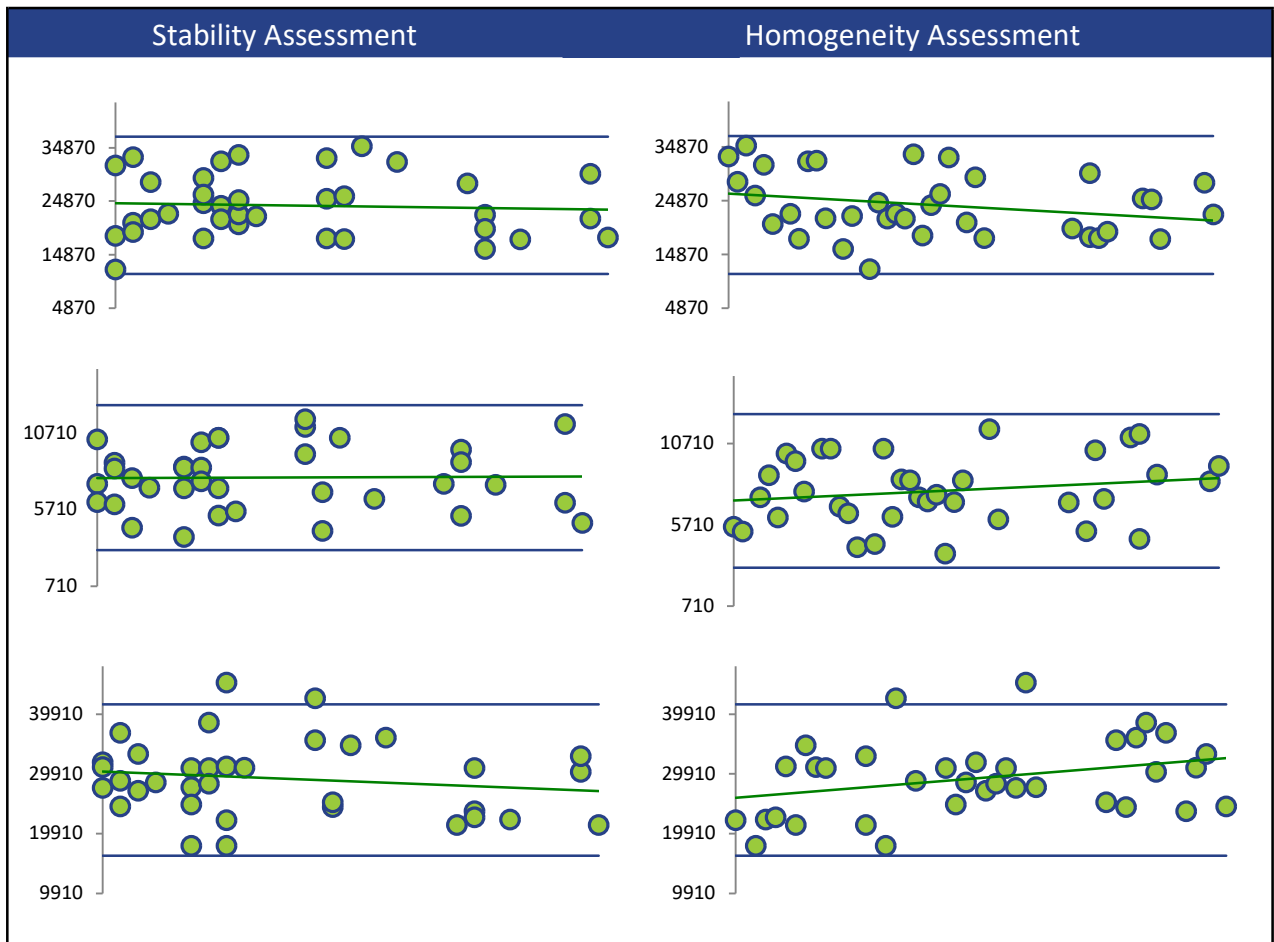
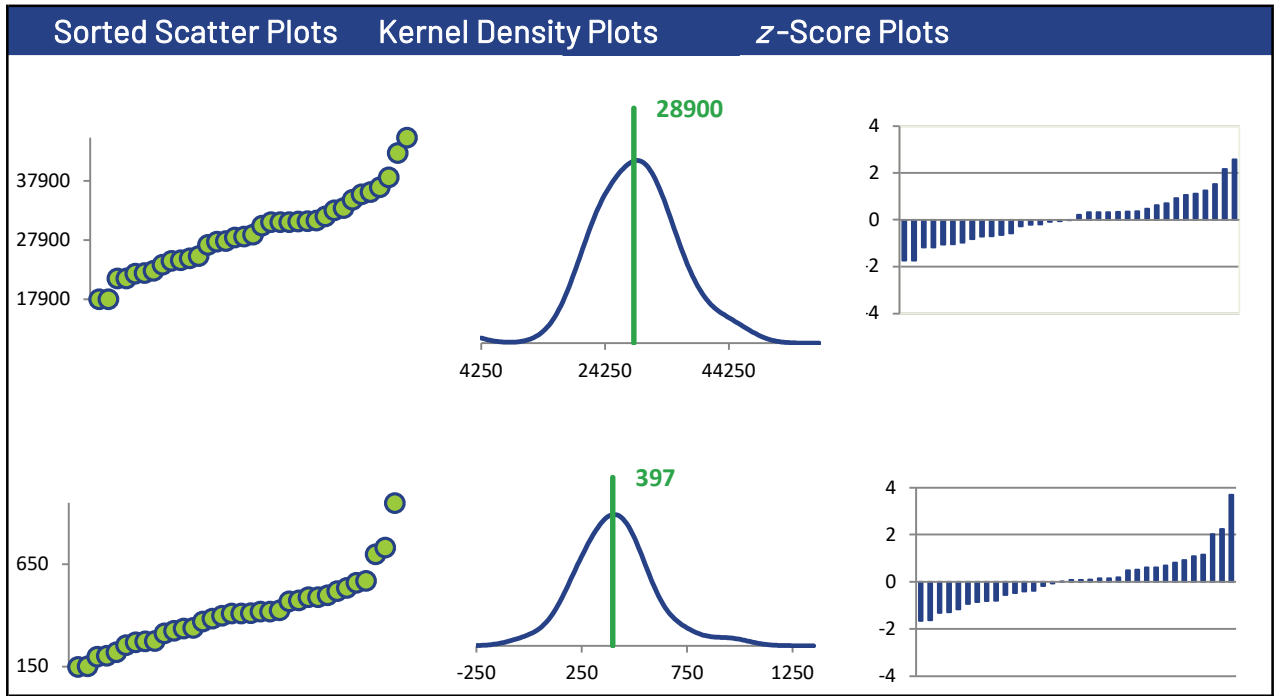
Methods Used

Method	C40B-1	C40B-2	C40B-3	C40B-4
GC/FID (Blue)	36	36	35	34

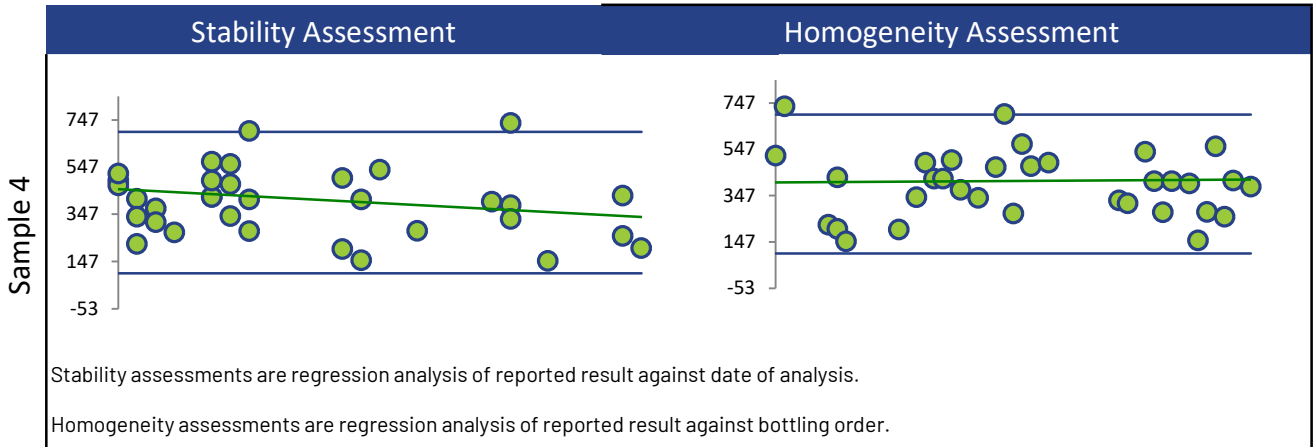
All summary stats and the plots below are based on the data excluding any flagged outliers



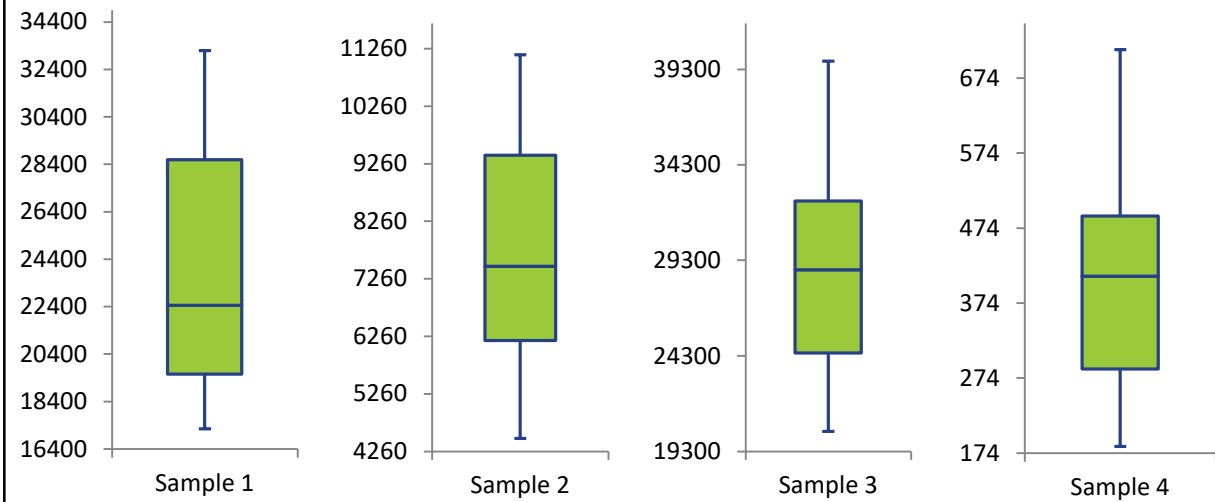
F2: C10-C16



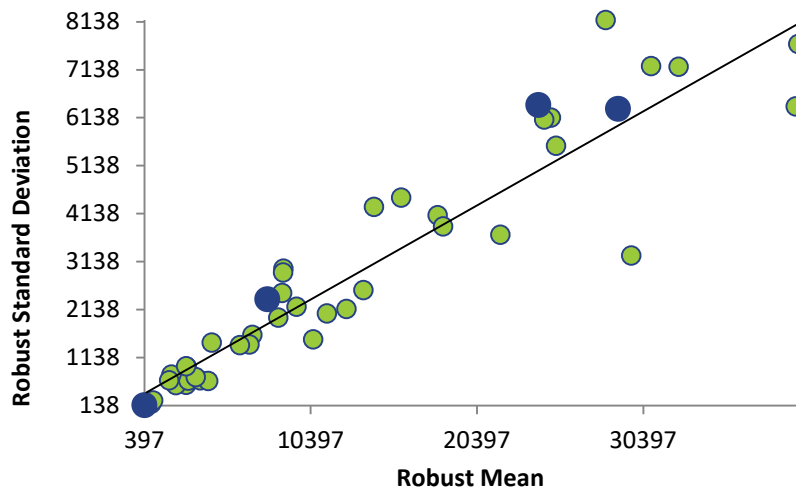
F2: C10-C16



Box and Whisker Plots



Current Round (blue) Compared to Historic Rounds (green)





F3: C16-C34

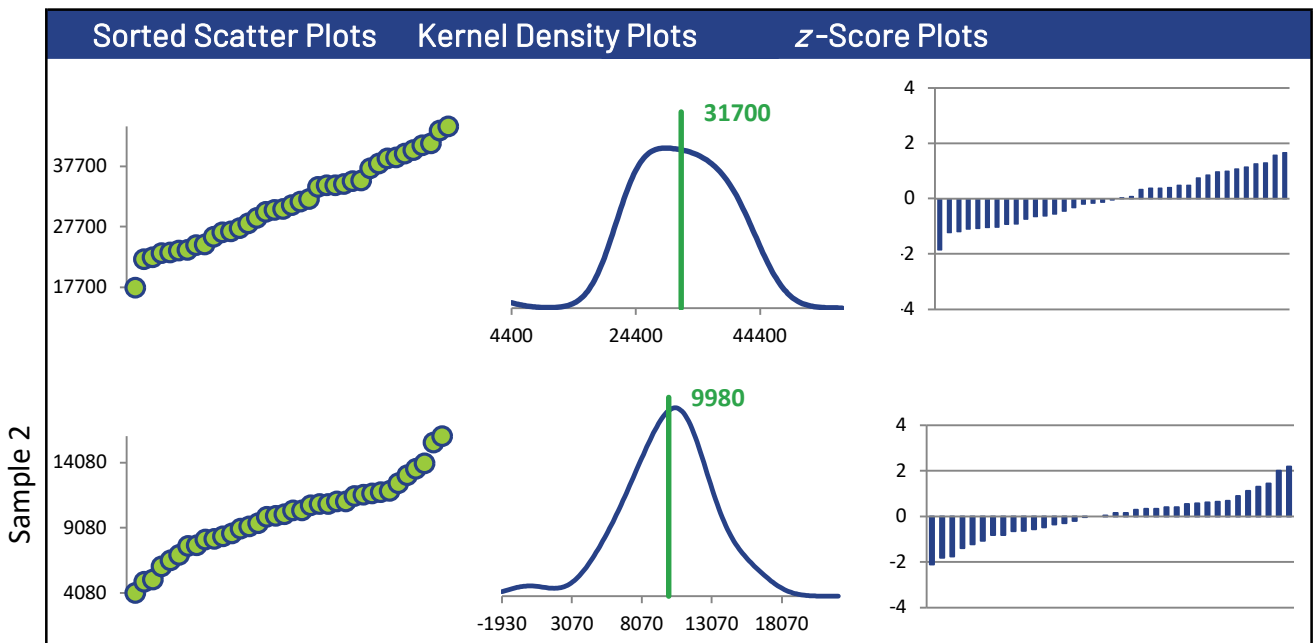
Summary Statistics

Statistic	C40B-1	C40B-2	C40B-3	C40B-4
N	37	36	35	35
Median µg/L	31300	10300	32000	1600
Robust Mean µg/L	31700	9980	33400	1590
U µg/L	1550	581	1510	105
Robust Standard Deviation µg/L	7560	2790	7130	496
Regression Standard Deviation µg/L	4760	1500	5010	238
Stability Flag				
Homogeneity Flag			Homogeneity	
Standard Deviation Used (SDPA) µg/L	7560	2790	9120	496
Outliers	0	1	2	2
z >3.0	0	0	0	0
2< z <3	0	3	0	4

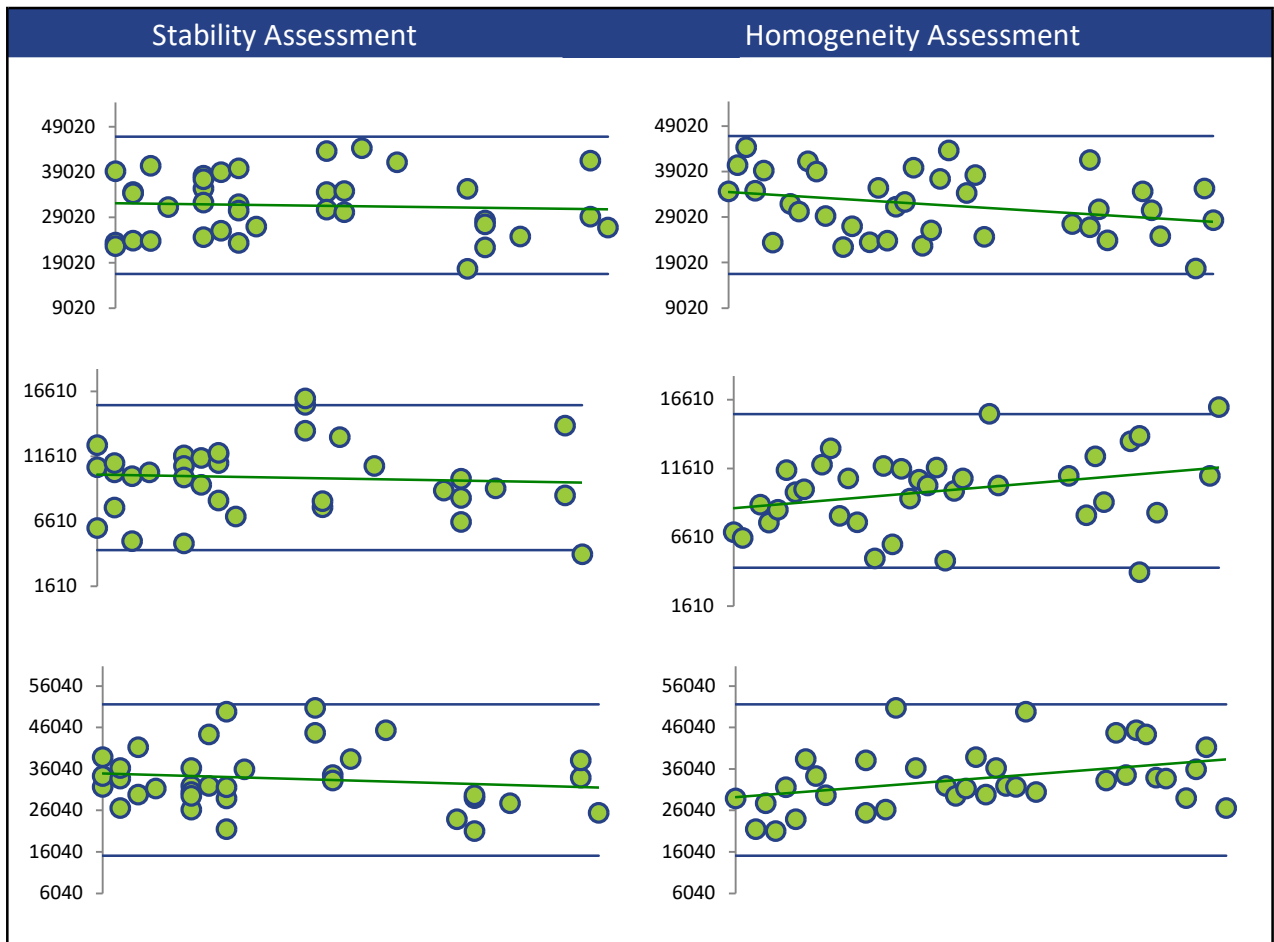
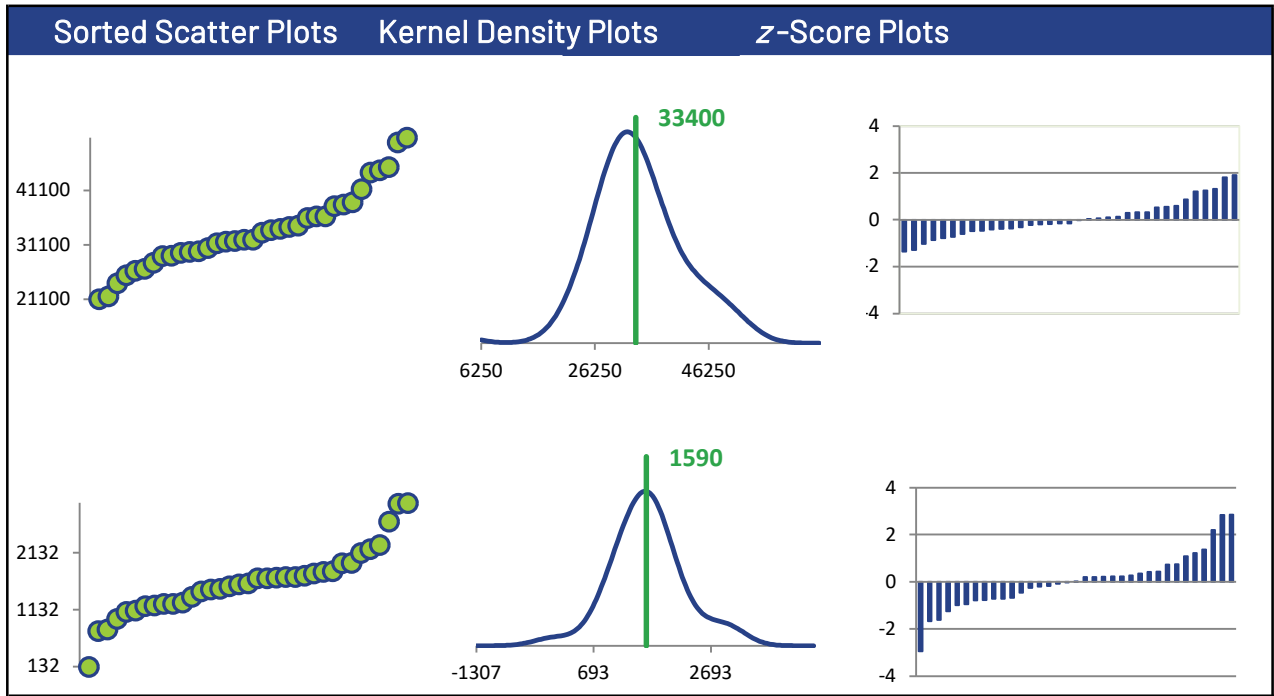
Methods Used

Method	C40B-1	C40B-2	C40B-3	C40B-4
GC/FID (Blue)	37	36	35	35

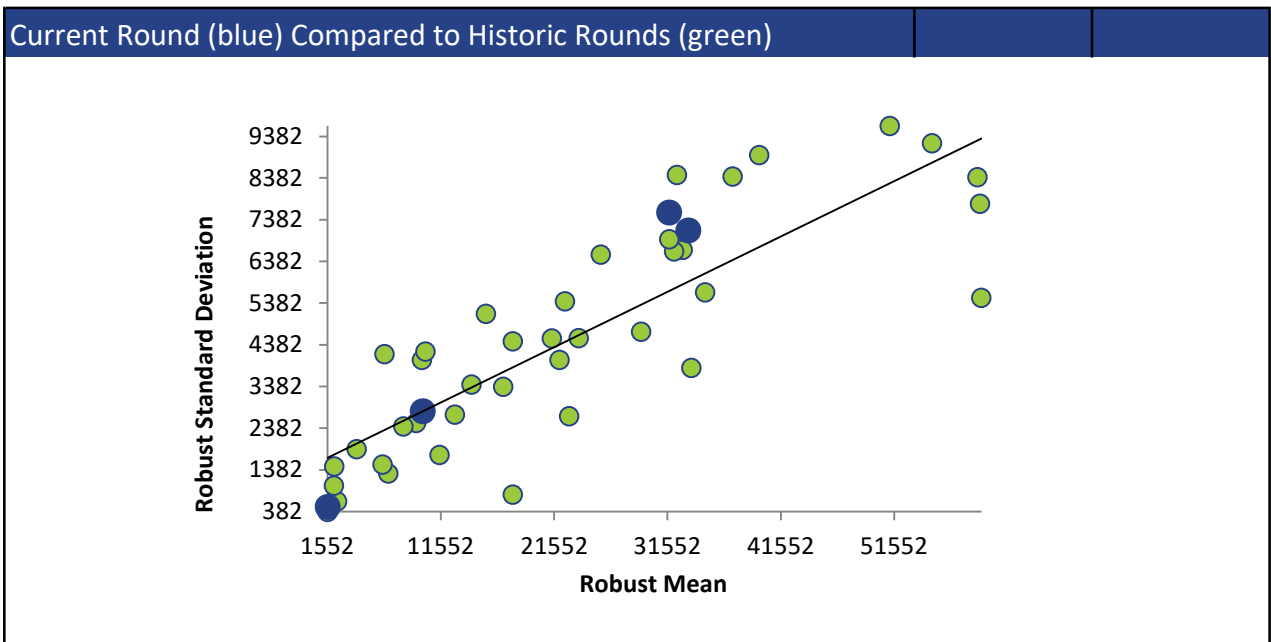
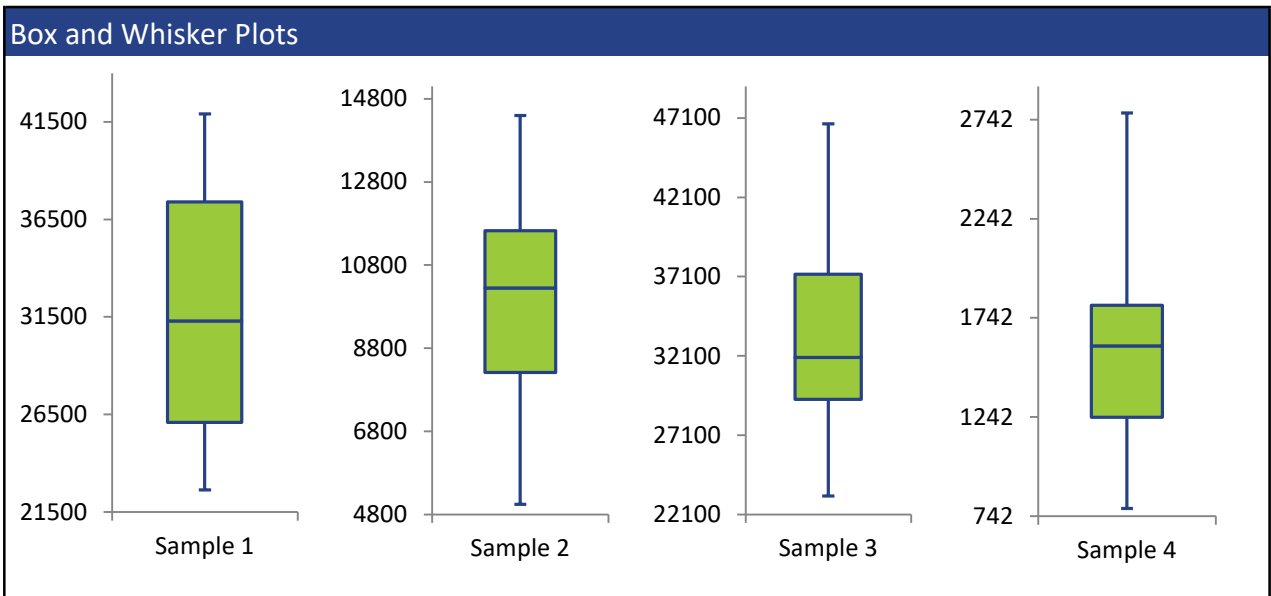
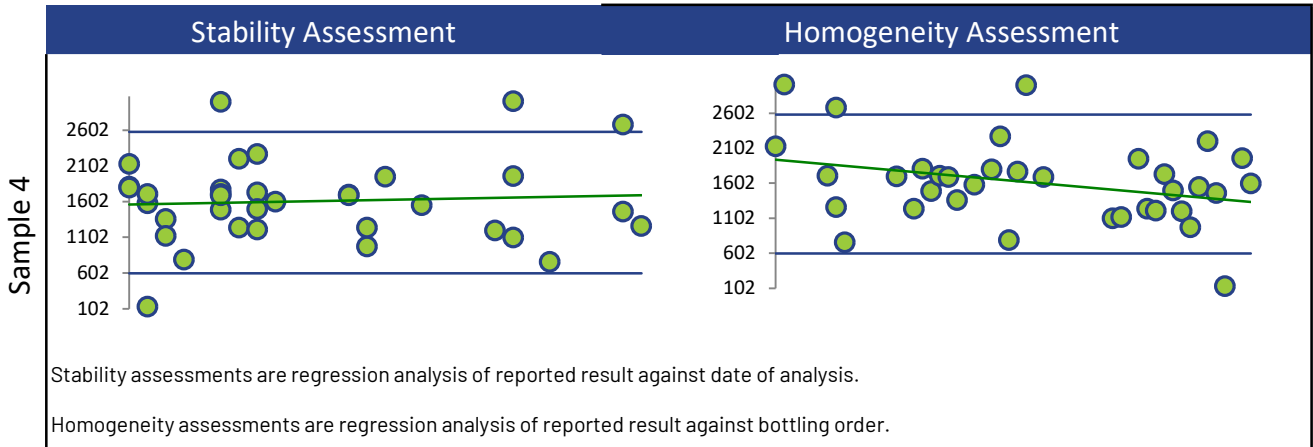
All summary stats and the plots below are based on the data excluding any flagged outliers



F3: C16-C34



F3: C16-C34



F4: C34-C50

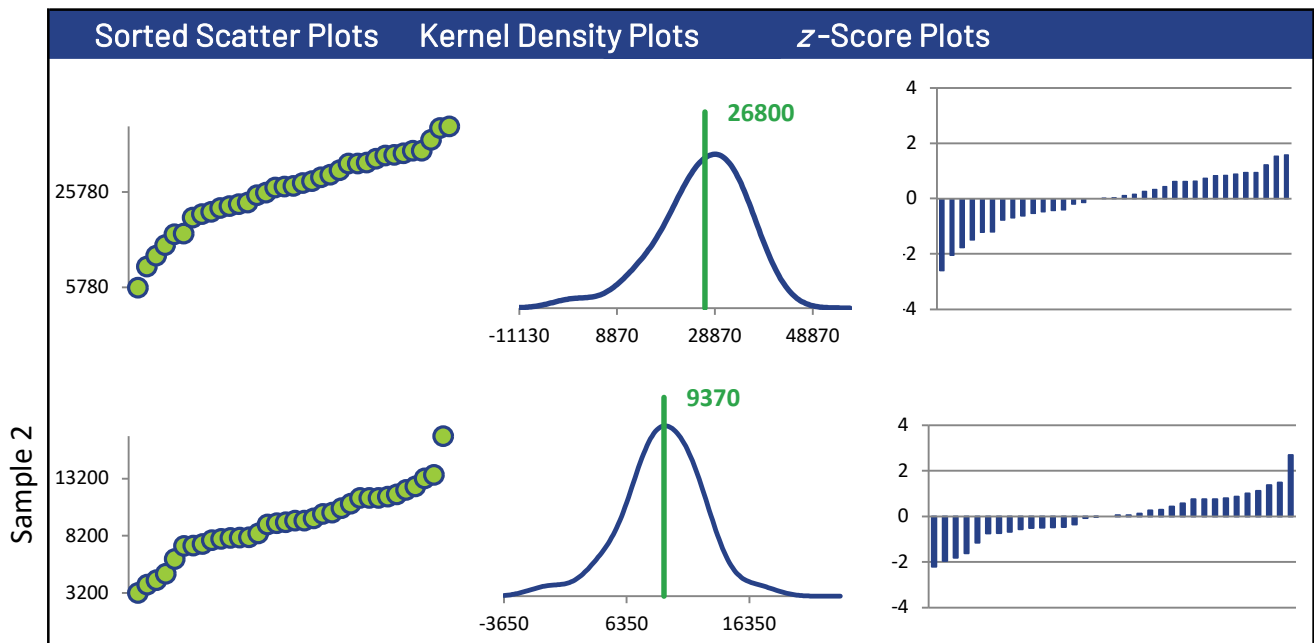
Summary Statistics

Statistic	C40B-1	C40B-2	C40B-3	C40B-4
N	35	34	34	33
Median µg/L	27100	9430	30300	2280
Robust Mean µg/L	26800	9370	29900	2310
U µg/L	1710	600	1770	152
Robust Standard Deviation µg/L	8100	2800	8250	698
Regression Standard Deviation µg/L	4020	1410	4480	346
Stability Flag				
Homogeneity Flag			Homogeneity	
Standard Deviation Used (SDPA) µg/L	8100	2800	13500	698
Outliers	0	1	1	2
z >3.0	0	0	0	0
2< z <3	2	2	0	2

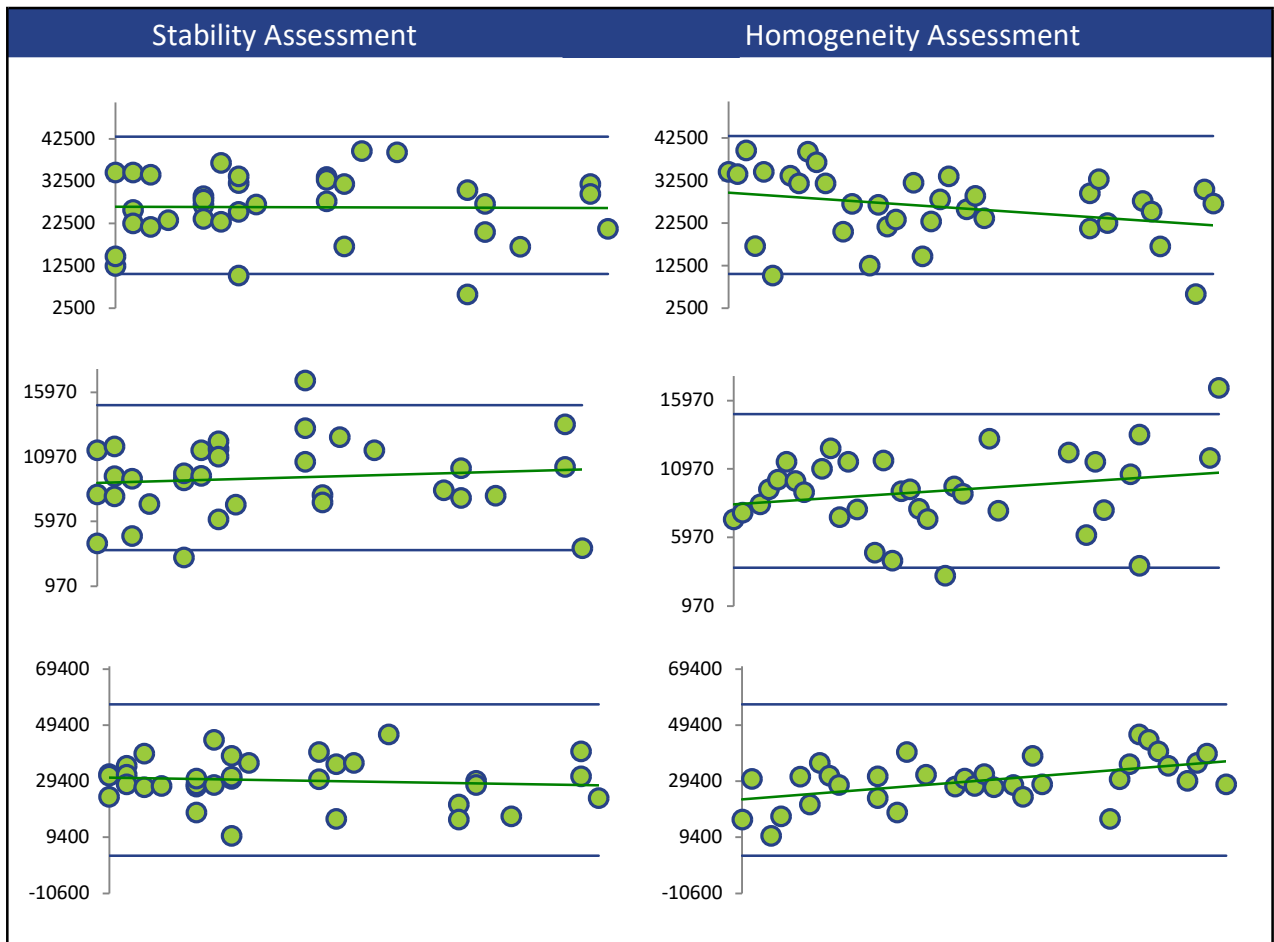
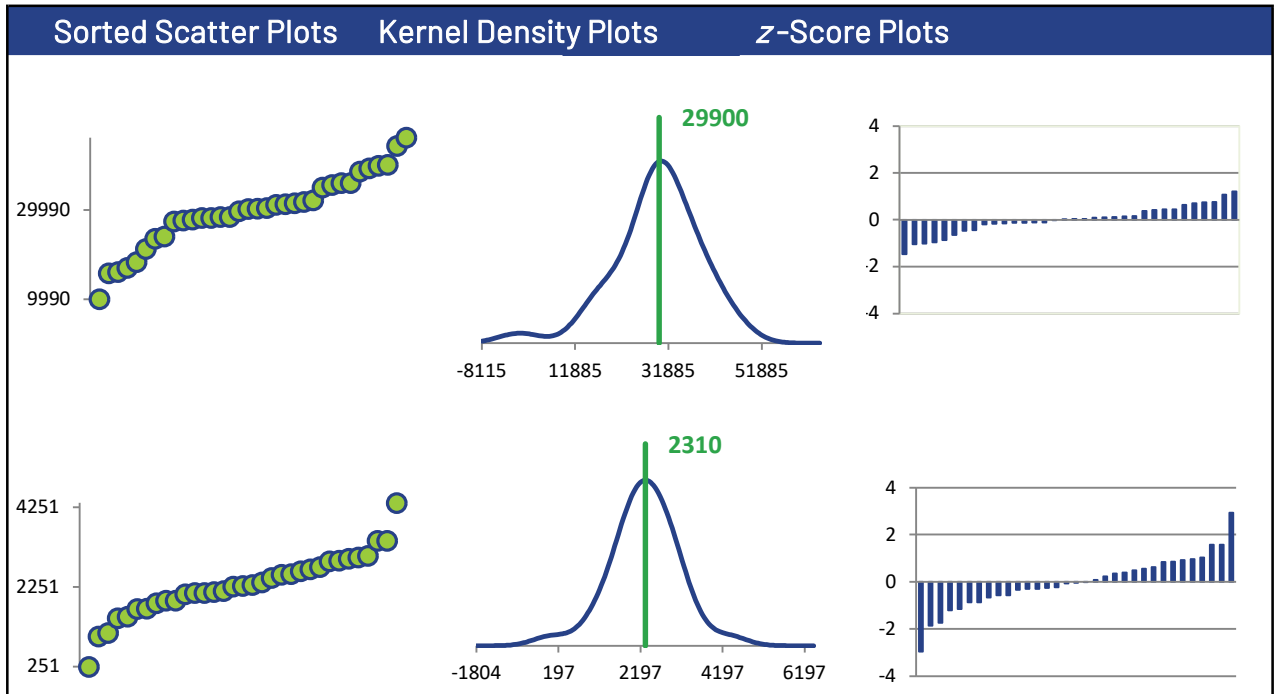
Methods Used

Method	C40B-1	C40B-2	C40B-3	C40B-4
GC/FID (Blue)	35	34	34	33

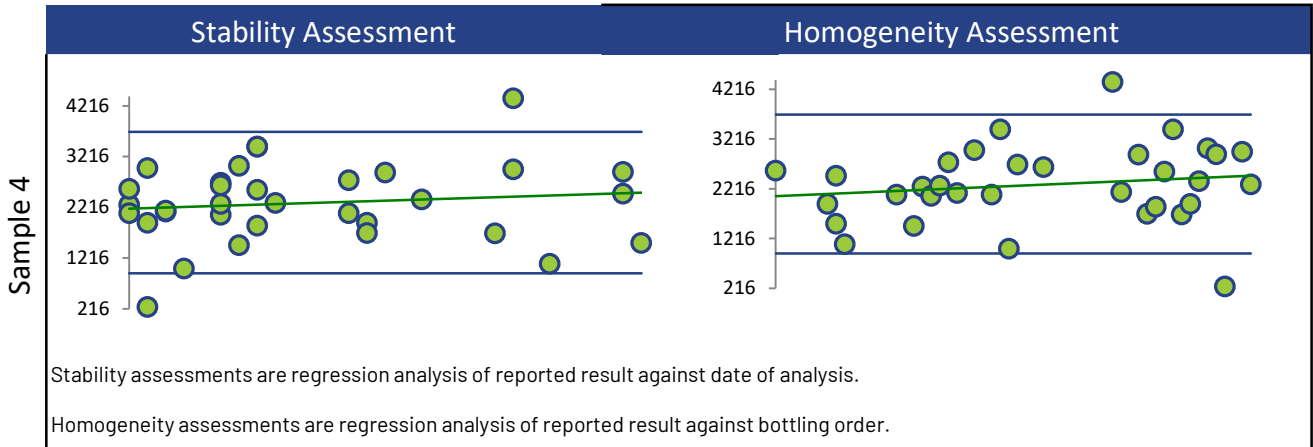
All summary stats and the plots below are based on the data excluding any flagged outliers



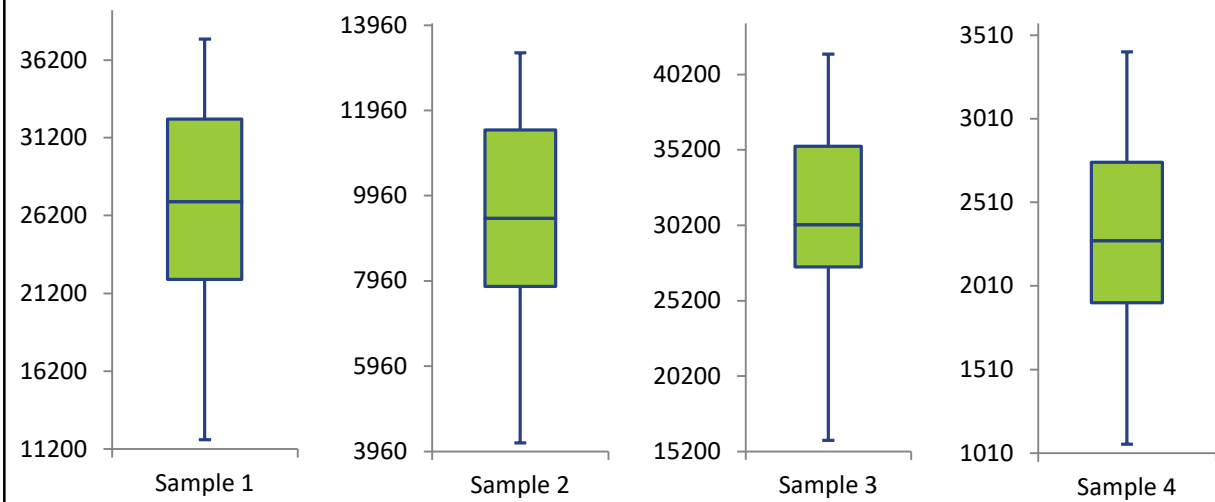
F4: C34-C50



F4: C34-C50



**Box and Whisker Plots**



**Current Round (blue) Compared to Historic Rounds (green)**

